

Flowrox™ slurry knife gate valves

Series SKW (wafer), SKF (flanged) and SKH (high pressure)

Heavy duty slurry knife gate valves isolate flow, even in the most demanding process conditions. The complete valve is built around an ease-of-maintenance concept. The designs of Flowrox slurry knife gate valves are based on years of experience Flowrox has gained, providing reliable solutions for abrasive and corrosive process applications. They feature a load distribution ring that prevents over-compression and ensures tight sealing between the sleeve and the valve gate. The high pressure version includes the ring sleeve retainer.

The valve's universal tower design accommodates most actuator types, allowing the actuator's interchangeability. The tower also ensures that the top plate, body and actuator are always aligned and the gate is in the right position. The valve body itself is a one-piece casting, eliminating the need for sealing between the body halves.

Flowrox SKF knife gate valves DN 900-1500 / 36"-60" use a new approach. Instead of a tower design, two actuator cylinders are positioned on the sides.

Benefits

- Cost-effective
- Reliable operation
- Long service intervals
- Trouble-free operation
- Small face-to-face dimension
- Easy installation
- Available in large size scale

Features

- One piece body, no leak risk
- Full bore, no flow restrictions
- Integrated load distribution ring, reliability in installation
- Reliable lubricated polyurethane secondary seal
- Bi-directional flow
- Removable bottom plate accommodates flushing ports, increased process safety

Sizes

- DN 80-1500 / 3"-60"
- *Other DN on request

Working pressures

- Up to 20 bar / 300 psi



Pressure classes

- PN 4, PN 6, PN 10 and PN 20
- 60 psi, 90 psi, 150 psi and 300 psi

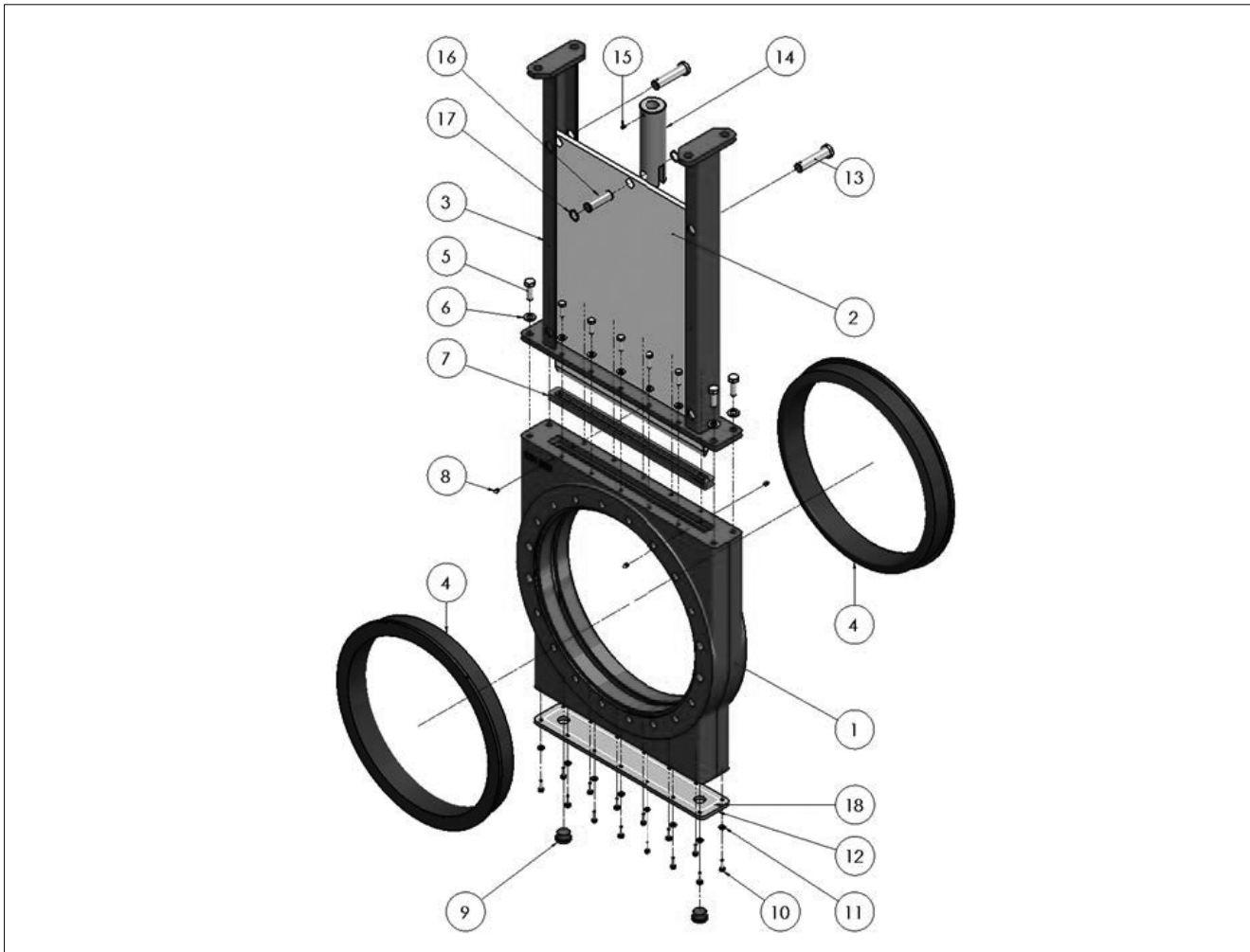
Materials

- 316 stainless steel
- Cast iron

Flange drillings

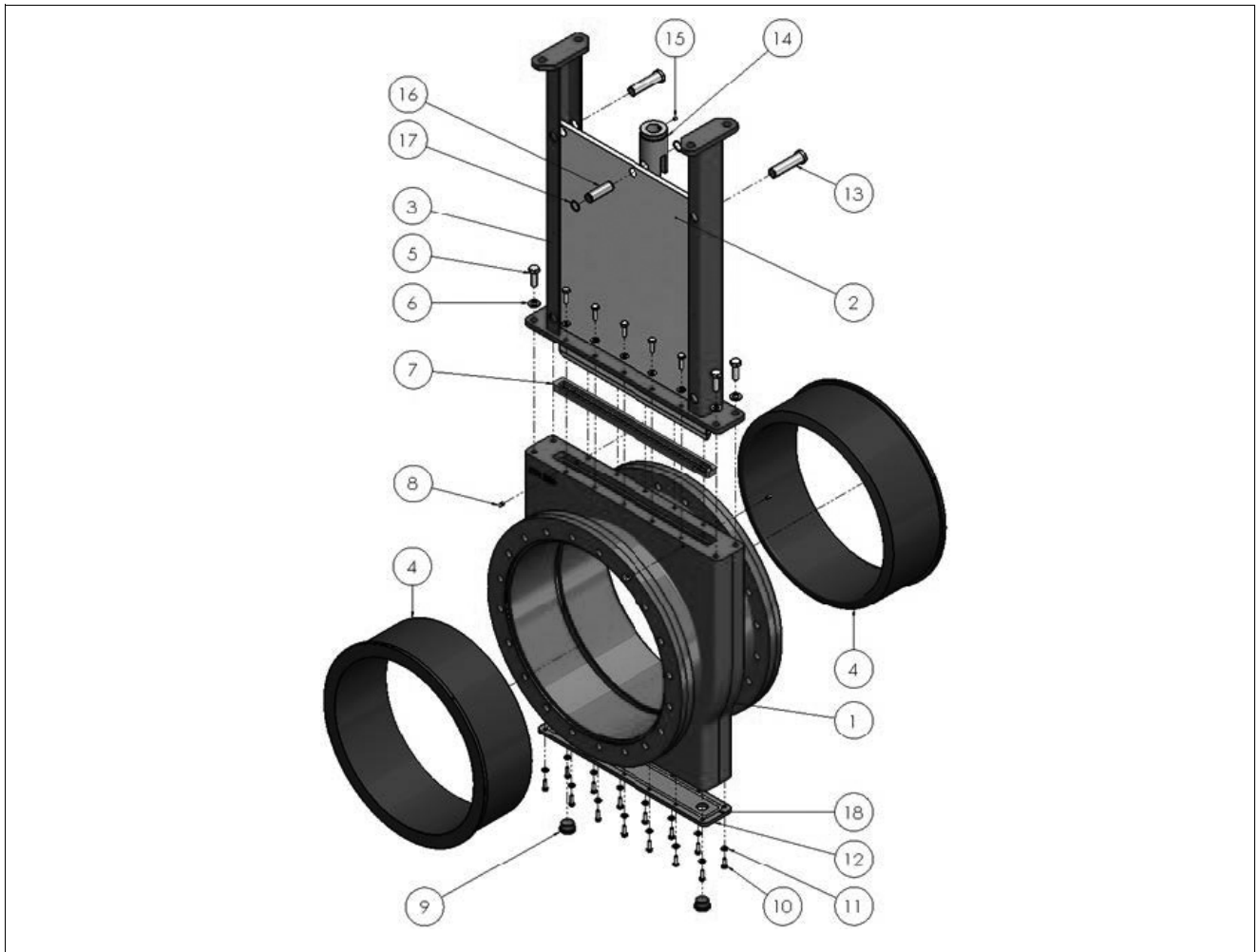
- DIN PN 10
- DIN PN 16
- DIN PN 25
- ASME B16.5 Class 150
- ASME B16.5 Class 300
- BS TABLE D
- AS TABLE D
- AS TABLE E
- JIS 10K
- JIS 16K

Exploded view and parts list, type SKW



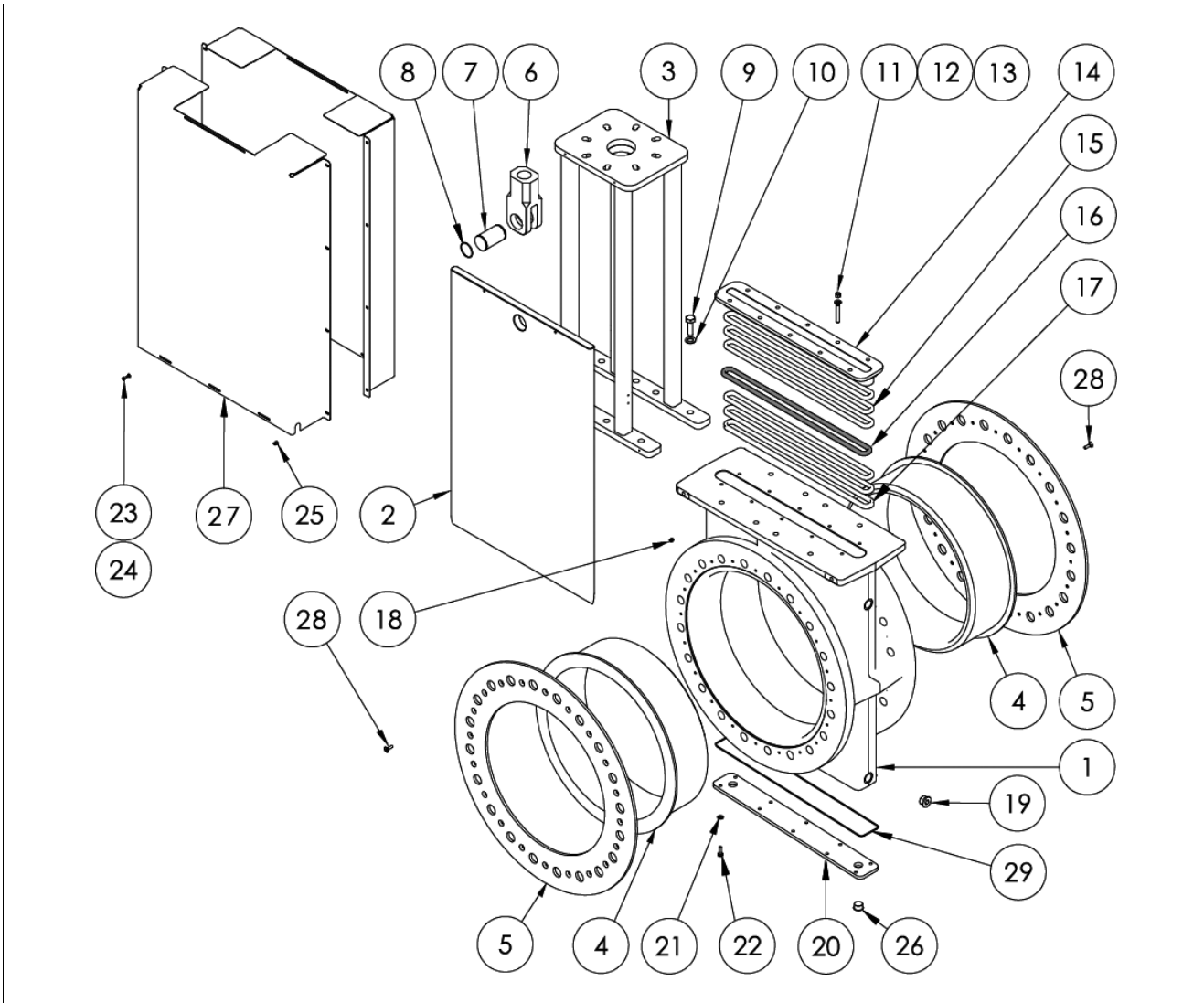
Part no.	Qty	Description
1	1	Valve body
2	1	Gate
3	1	Tower
4	2	Ring sleeve
5		Tower mounting bolt
6		Tower mounting washer
7	1	Secondary seal
8	4	Grease nipple
9	2	Protective plug
10		Bottom cover bolt
11		Bottom cover washer
12	1	Bottom cover plate
13	2	Locking pin (optional)
14	1	Clevis
15	1	Clevis locking screw
16	1	Clevis pin
17	2	Retaining ring
18	1	PTFE sealing strip

Exploded view and parts list, type SKF



Part no.	Qty	Description
1	1	Valve body
2	1	Gate
3	1	Tower
4	2	Ring sleeve
5		Tower mounting bolt
6		Tower mounting washer
7	1	Secondary seal
8	4	Grease nipple
9	2	Protective plug
10		Bottom cover bolt
11		Bottom cover washer
12	1	Bottom cover plate
13	2	Locking pin (optional)
14	1	Clevis
15	1	Clevis locking screw
16	1	Clevis pin
17	2	Retaining ring
18	1	PTFE sealing strip

Exploded view of SKH



Part	Qty	Description	Part	Qty	Description
1	1	Valve body	16		Grease box
2	1	Gate	17		Gland bush
3	1	Tower	18	2	Grease nipple
4	2	Ring sleeve (recommended spare part)	19		Flushing plug
5	2	Ring sleeve retainer	20	1	Cover plate
6	1	Clevis	21		Washer
7	1	Clevis pin	22		Bolt
8	2	Clevis pin retaining ring	23		Bolt
9		Tower mounting bolt	24		Washer
10		Tower mounting washer	25		Nut
11		Gland retainer nut	26		Plug
12		Gland retainer stud bolt	27		Guard
13		Gland washer	28		Socket head countersunk bolt
14	1	Gland retainer	29		Body sealing
15		Gland packing seal			

Technical specifications

Type:

Full bore wafer (SKW), flanged (SKF) or high pressure (SKH) type knife gate valve.

Sizes:

SKW: Size DN50-600 / 2"-24"
 SKF: Size DN80-1500 / 3"-60"
 SKH: Size DN80-600 / 3"-24"

Temperature range:

0 °C...+100 °C / 32 °F...+212 °F

Pressures classes:

Series	Valve size, DN / inch	Pressure class, bar / psi
SKH	80-600 / 3-24	20 / 300
SKW	50-600 / 2-24	10 / 150
SKF	80-900 / 3-36	10 / 150
SKF	1000-1200 / 40-48	6 / 90
SKF	1300-1500 / 54-60	4 / 60

Suitable to be fitted between flanges acc. to:

DIN PN 10
 DIN PN 16
 DIN PN 25
 ASME B16.5 Class 150
 ASME B16.5 Class 300
 BS TABLE D
 AS TABLE D
 AS TABLE E
 JIS 10K
 JIS 16K

Valve tightness:

Manufacturers standard, zero leak
 Rate A

Construction materials:

Body: Cast iron
 AISI 316 stainless steel
 Gate: AISI 316, Duplex 2205, Duplex 2101,
 17-4PH, ALLOY C-276, DUPLEX 2507,
 AISI 316L, AISI 904L
 Ring sleeve: NR
 NBR
 EPDM

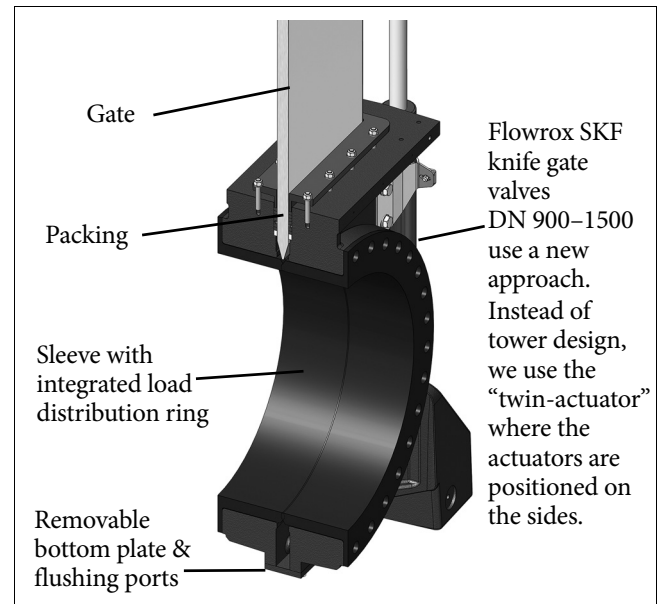
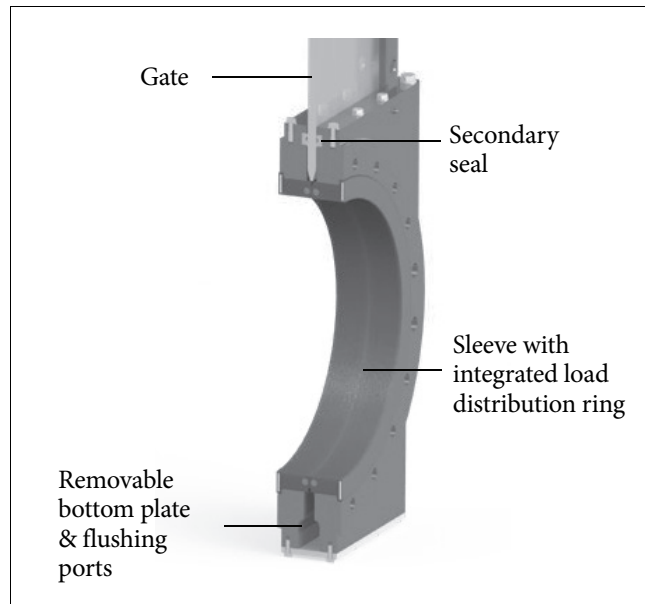
Slurry knife gate body design

SKW wafer DN50-600 / 2"-24"

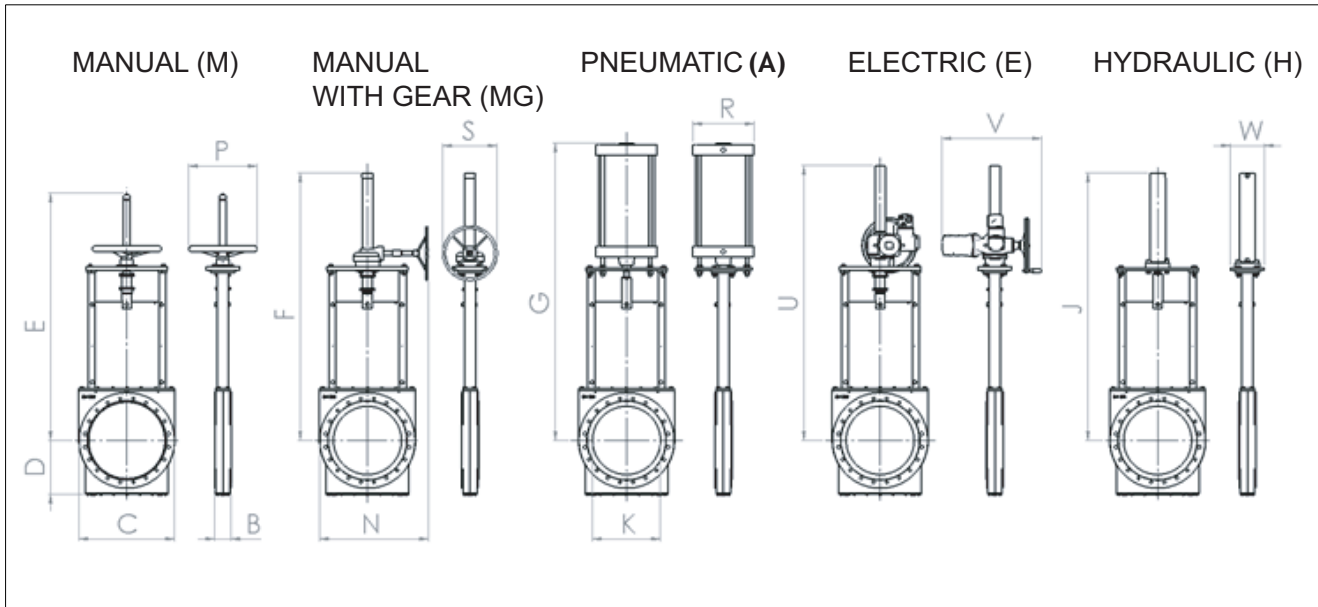
SKF flanged DN80-600 / 3"-24"

SKF flanged 700-1500 / 28"-60"

SKH high pressure 80-600 / 3"-24"



Dimensions, SKW valves



Valve size DN	Dimensions in mm																Weight (kg)					T
	B	B*	C	D	E	F	G	J	U	K	N	P	R	S	V	W	M	MG	A	E	H	
					M	MG	A	H	E	MG	M	A	MG	E	H							
50	54	58	165	102	566	-	586	-	-	-	-	350	110	-	-	-	20	-	17	-	-	G1/2"
80	57	61	200	112	628	-	683	-	739	80	-	350	110	-	513	-	24	-	22	48	-	G1/2"
100	57	61	230	132	648	-	725	-	751	100	-	350	120	200	513	-	30	-	28	51	-	G1/2"
150	64	68	285	157	921	-	972	-	879	150	-	350	176	200	513	150	42	-	49	64	-	G1/2"
200	76	80	346	188	1006	1148	1115	988	972	200	427	350	220	200	513	150	61	87	75	83	59	G1/2"
250	76	80	410	223	1133	1164	1316	1168	1150	250	459	350	284	200	537	180	82	-	113	104	-	G1/2"
300	83	87	483	262	-	1380	1512	1278	1363	300	535	-	340	400	537	200	-	134	190	150	-	G 1"
350	83	87	533	285	-	1455	1661	1521	1481	350	560	-	340	600	724	200	-	145	215	184	146	G 1"
400	95	99	600	322	-	1574	1799	1700	1600	400	698	-	340	400	724	200	-	186	260	222	187	G 1"
450	95	99	645	352	-	1875	2049	1831	1834	450	771	-	450	400	724	250	-	229	318	262	243	G 1"
500	121	125	705	403	-	1962	2180	1962	2015	500	801	-	450	500	731	250	-	316	400	370	320	G 1"
600	121	125	825	447	-	2250	2323	2291	2234	600	861	-	630	600	795	250	-	461	592	532	484	G 1"

Valve size inch	Dimensions in inch																Weight in lbs					T
	B	B*	C	D	E	F	G	J	U	K	N	P	R	S	V	W	M	MG	A	E	H	
					M	MG	A	H	E	MG	M	A	MG	E	H							
2	2.13	2.28	6.50	4.02	22.28	-	23.07	-	-	-	-	13.78	4.33	-	-	-	44	-	37	-	-	G1/2"
3	2.24	2.40	7.87	4.41	24.72	-	26.89	-	29.09	3.15	-	13.78	4.33	-	20.20	-	53	-	48	106	-	G1/2"
4	2.24	2.40	9.06	5.20	25.51	-	28.54	-	29.57	3.94	-	13.78	4.72	7.87	20.20	-	66	-	62	112	-	G1/2"
6	2.52	2.68	11.22	6.18	36.26	-	38.27	-	34.61	5.91	-	13.78	6.93	7.87	20.20	5.91	92	-	108	141	-	G1/2"
8	2.99	3.15	13.62	7.40	39.61	45.20	43.90	38.90	38.27	7.87	16.81	13.78	8.66	7.87	20.20	5.91	134	191	165	183	130	G1/2"
10	2.99	3.15	16.14	8.78	44.61	45.83	51.81	45.98	45.28	9.84	18.07	13.78	11.18	7.87	21.14	7.09	180	-	249	229	-	G1/2"
12	3.27	3.43	19.02	10.31	-	54.33	59.53	50.31	53.66	11.81	21.06	-	13.39	15.75	21.14	7.87	-	295	418	330	-	G 1"
14	3.27	3.43	20.98	11.22	-	57.28	65.39	59.88	58.31	13.78	22.05	-	13.39	23.62	28.50	7.87	-	319	473	405	321	G 1"
16	3.74	3.90	23.62	12.68	-	61.97	70.83	66.93	62.99	15.75	27.48	-	13.39	15.75	28.50	7.87	-	409	572	488	411	G 1"
18	3.74	3.90	25.39	13.86	-	73.82	80.67	72.09	72.20	17.72	30.35	-	17.72	15.75	28.50	9.84	-	504	700	576	535	G 1"
20	4.76	4.92	27.76	15.87	-	77.24	85.83	77.24	79.33	19.69	31.54	-	17.72	19.69	28.78	9.84	-	695	880	814	704	G 1"
24	4.76	4.92	32.48	17.60	-	88.58	91.46	90.20	87.95	23.62	33.90	-	24.80	23.62	31.30	9.84	-	1014	1302	1170	1065	G 1"

Bigger sizes on request

B* = ring sleeve uncompressed

M = handwheel

MG = manual with gearbox

A = pneumatic

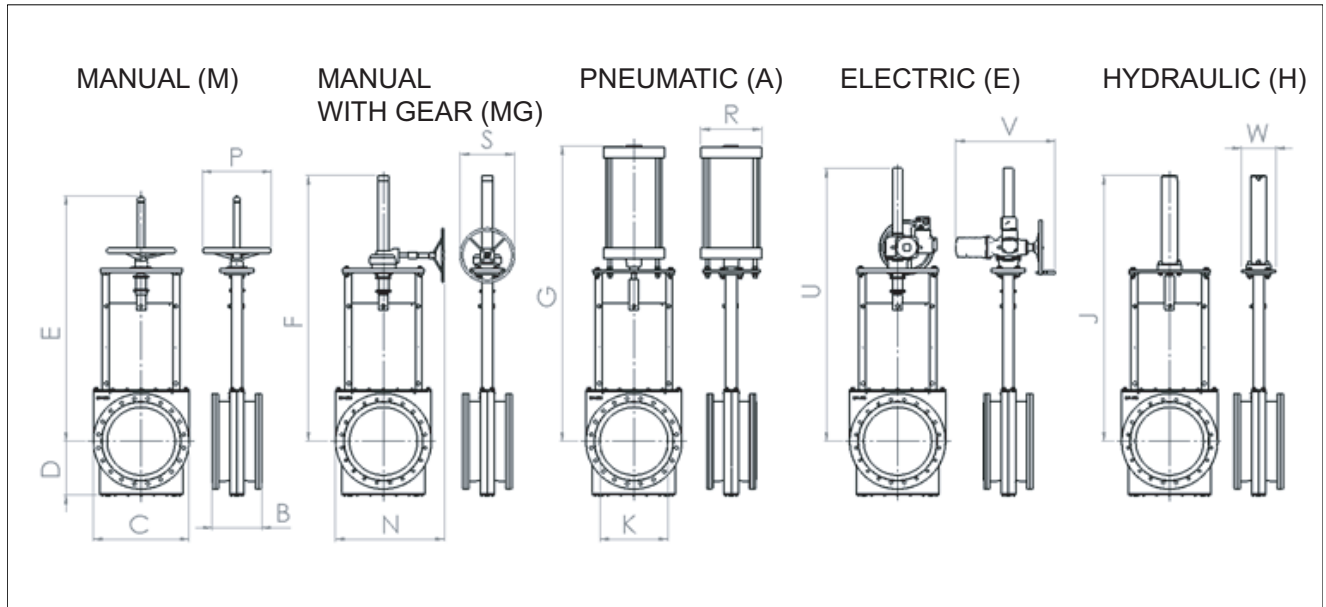
E = electric

H = hydraulic

T = flushing connection

Manual and electric valve stems are covered by bellows.

Dimensions, SKF valves



Valve size DN	Dimensions in mm																Weight (kg)						T
	B	B*	C	D	E	F	G	J	U	K	N	P	R	S	V	W	M	MG	A	E	H		
					M	MG	A	H	E	MG	M	A	MG	E	H								
80	175	179	200	112	628	-	683	-	739	80	-	350	110	-	513	-	32	-	31	57	-	G 1/2"	
100	175	179	230	132	648	-	725	-	751	100	-	350	120	200	513	-	39	-	41	64	-	G 1/2"	
150	178	182	285	157	921	-	972	-	879	150	-	350	176	200	513	150	41	-	66	80	-	G 1/2"	
200	184	188	346	188	1006	1148	1115	988	972	200	427	350	220	200	513	150	85	-	100	108	-	G 1/2"	
250	226	230	410	223	-	1164	1316	1168	1150	250	459	-	284	200	537	180	-	-	143	142	-	G 1/2"	
300	257	261	483	262	1133	1380	1512	1278	1363	300	535	-	340	400	537	200	-	187	253	203	-	G 1"	
350	257	261	533	285	-	1455	1661	1521	1481	350	560	-	340	600	724	200	-	215	282	252	216	G 1"	
400	279	283	600	322	-	1574	1799	1700	1600	400	698	-	340	400	724	200	-	284	349	320	285	G 1"	
450	311	315	645	352	-	1875	2049	1831	1834	450	771	-	450	400	724	250	-	335	420	368	344	G 1"	
500	359	363	705	403	-	1962	2180	1962	2015	500	801	-	450	500	731	250	-	447	527	501	451	G 1"	
600	372	376	825	447	-	2250	2323	2291	2234	600	861	-	-	600	795	250	-	629	-	700	652	G 1"	
700	378	410	1200	578	-	-	-	2975	2988	700	-	-	-	-	795	325	-	-	-	-	-	G 1"	
750	396	420	1200	578	-	-	-	3025	3054	750	-	-	-	-	795	325	-	-	-	-	-	G 1"	
800	412	436	1420	607	-	-	-	3200	3161	800	-	-	-	-	795	325	-	-	-	-	-	G 1 1/2"	

Valve size inch	Dimensions in inch																Weight in lbs						T
	B	B*	C	D	E	F	G	J	U	K	N	P	R	S	V	W	M	MG	A	E	H		
					M	MG	A	H	E	MG	M	A	MG	E	H								
3	6.89	7.05	7.87	4.41	24.72	-	26.89	-	29.09	3.15	-	13.78	4.33	-	20.20	-	70	-	68	125	-	G 1/2"	
4	6.89	7.05	9.06	5.20	25.51	-	28.54	-	29.57	3.94	-	13.78	4.72	7.87	20.20	-	86	-	90	141	-	G 1/2"	
6	7.01	7.17	11.22	6.18	36.26	-	38.27	-	34.61	5.91	-	13.78	6.93	7.87	20.20	5.91	90	-	145	176	-	G 1/2"	
8	7.24	7.40	13.62	7.40	39.61	45.20	43.90	38.90	38.27	7.87	16.81	13.78	8.66	7.87	20.20	5.91	187	-	220	238	-	G 1/2"	
10	8.90	9.06	16.14	8.78	44.61	45.83	51.81	45.98	45.28	9.84	18.07	-	11.18	7.87	21.14	7.09	-	-	315	312	-	G 1/2"	
12	10.12	10.28	19.02	10.31	-	54.33	59.53	50.31	53.66	11.81	21.06	-	13.39	15.75	21.14	7.87	-	411	557	447	-	G 1"	
14	10.12	10.28	20.98	11.22	-	57.28	65.39	59.88	58.31	13.78	22.05	-	13.39	23.62	28.50	7.87	-	473	620	554	475	G 1"	
16	10.98	11.14	23.62	12.68	-	61.97	70.83	66.93	62.99	15.75	27.48	-	13.39	15.75	28.50	7.87	-	625	768	704	627	G 1"	
18	12.24	12.40	25.39	13.86	-	73.82	80.67	72.09	72.20	17.72	30.35	-	17.72	15.75	28.50	9.84	-	737	924	810	757	G 1"	
20	14.13	14.29	27.76	15.87	-	77.24	85.83	77.24	79.33	19.69	31.54	-	17.72	19.69	28.78	9.84	-	983	1159	1102	992	G 1"	
24	14.65	14.80	32.48	17.60	-	88.58	91.46	90.20	87.95	23.62	33.90	-	-	23.62	31.30	9.84	-	1384	-	1540	1434	G 1"	
28	14.88	16.14	47.24	22.76	-	-	-	117.13	117.64	27.56	-	-	-	-	31.30	12.80	-	-	-	-	-	G 1"	
30	15.59	16.54	47.24	22.76	-	-	-	119.09	120.24	29.53	-	-	-	-	31.30	12.80	-	-	-	-	-	G 1"	
32	16.22	17.17	55.91	23.90	-	-	-	125.98	124.45	31.50	-	-	-	-	31.30	12.80	-	-	-	-	-	G 1 1/2"	

Bigger sizes on request

B* = ring sleeve uncompressed

M = handwheel

MG = manual with gearbox

A = pneumatic

E = electric

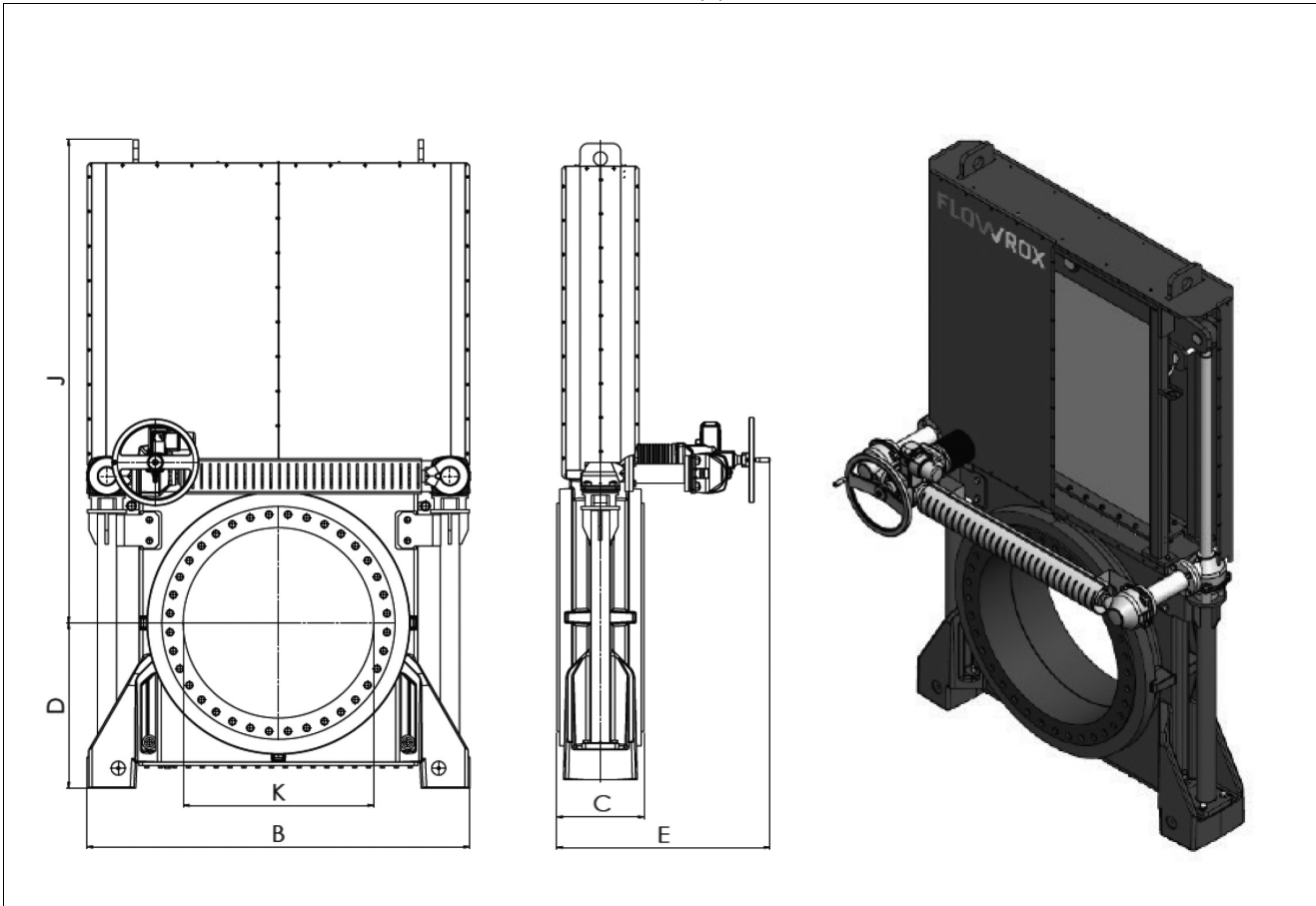
H = hydraulic

T = flushing connection

Manual and electric valve stems are covered by bellows.

Dimensions for twin-tower design and SKH

Electric (E)

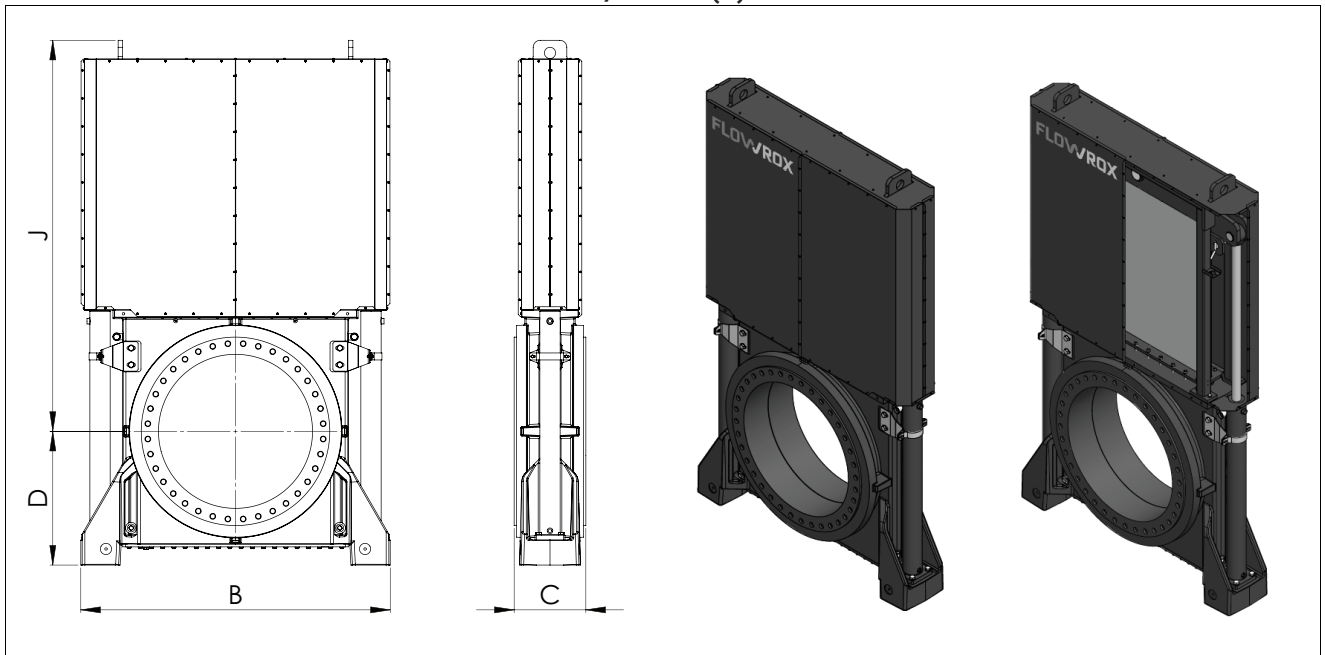


Valve size (DN)	B	C	D	E	J	K	Pressure (bar)	Weight (kg)
900	1850	469	805	985	x	900	10	x
1000	2060	512	880	1020	x	1000	6	x
1050	2060	512	880	1020	2482	1050	6	x
1200	2210	512	995	1020	2783	1200	6	~4550
1350	2360	512	1030	1125	3027	1350	4	~5200
1500	2510	512	1105	1125	3272	1500	4	~5600

Valve size (NPS)	B	C	D	E	J	K	Pressure	Weight
36	74	19	32	39	x	36	150	x
40	82	20	35	41	x	40	90	x
42	82	20	35	41	99	42	90	x
48	88	20	40	41	111	48	90	~10031
54	94	20	41	45	121	54	60	~11464
60	100	20	44	45	131	60	60	~12346

Flange drilling PN10 and ASME B16.5 class 150, others on request. Dimensions and weight are for guidance only – detailed drawings available on request. All dimensions in millimeters.

Hydraulic (H)



Valve size (DN)	B	C	D	J	K	Pressure (bar)	Weight (kg)
900	1850	469	805	x	900	10	x
1000	2060	512	880	x	1000	6	x
1050	2060	512	880	2482	1050	6	x
1200	2210	512	995	2783	1200	6	~4400
1350	2360	512	1030	3027	1350	4	~5000
1500	2510	512	1105	3272	1500	4	~5500

Valve size (NPS)	B	C	D	J	K	Pressure	Weight
36	74	19	32	x	36	150	x
40	82	20	35	x	40	90	x
42	82	20	35	99	42	90	x
48	88	20	40	111	48	90	~9700
54	94	20	41	121	54	60	~11023
60	100	20	44	131	60	60	~12125

Flange drilling PN10 and ASME B16.5 class 150, others on request. Dimensions and weight are for guidance only – detailed drawings available on request. All dimensions in millimeters.

How to order

1.	2.	3.	4.	5.	6.	7.	8.	9.	10.	11.	12.
SKW	300	A	10	-	2	0	S1	-	NR	-	RIZ1

1.	PRODUCT TYPE	2.	PRODUCT SIZE DN
SKW	Flowrox heavy duty wafer knife gate valve.		50..1500 a)
SKF	Flowrox heavy duty flanged knife gate valve.		
SKH	Flowrox heavy duty high pressure knife gate valve.		

3.		ACTUATOR											
AUIC						EB				H		MG	
PNEUMATIC						ELECTRIC				HYDRAULIC		MANUAL	
CYLINDER		MANUAL OVERRIDE		FAIL OPTIONS		TYPE		VOLTAGE RANGE		TYPE		TYPE	
A	Pneumatic cylinder	-	NONE	-	NONE	E	Electric On-Off AUMA Norm	-	400V/50hz	H	Hydraulic	M	Manual handwheel
A1S	Pneumatic with stainless piston rod, tie rods and painted cylinder	B	Manual override	U2C	With pneumatic spring (Pressure switch) FAIL CLOSE	EP	Electric On- Off with feedback unit EWG 01.1, AUMA	B	380V/50hz			MG	Manual with bevel gear
A2S	Pneumatic "Stainless" no painting			U2O	With pneumatic spring (Pressure switch) FAIL OPEN	ES	Electric On-Off AUMA-Matic	C	440V/50hz			MCW	Chainwheel
				VC	With mechanical spring FAIL CLOSE a)	EL	Electric On/Off	D	525V/50hz				
				VO	With mechanical spring FAIL OPEN a)			E	460V/60hz				
								N	Other				

a) Not available on all sizes. Contact Flowrox.

4.	PRESSURE CLASS (PN) b)
4	4 bar / 60 psi
8	8 bar / 90 psi
10	10 bar / 150 psi
20	20 bar / 300 psi

7.	BODY MATERIAL
0	Cast iron / Ductile Iron
2	AISI 316
4	Other

6.	FLANGE DRILLING
2	DIN PN 10
3	DIN PN 16
4	DIN PN 25
5	DIN PN 40
6	ASME B16.5 class 150
7	ASME B16.5 class 300
8	BS TABLE D
9A	AS TABLE D
9B	AS TABLE E
9C	JIS 10
9D	JIS 16
9	OTHER

8.	GATE MATERIAL
S1	AISI 316
S2	Duplex 2205
S3	Duplex 2101
S4	17-4PH*
S5	ALLOY C-276
S6	DUPLEX 2507
S7	AISI 316L
S8	AISI 904L

9.	GATE COATING
-	NONE

10.	RING SLEEVE MATERIAL
NR	Natural rubber
NBR	Nitrile
EPDM	Ethylene Propylene

12.	AUXILIARIES			
	DESCRIPTION	EXTRA INFO	APPLICABLE ACTUATOR	
B	Pressure Booster in air supply	Pressure booster determined by Flowrox, used to increase the supply air pressure to secure enough force for pneumatic cylinder.	PNEUMATIC	*
F	Filter Regulator + gauge	Filter Regulator + GaugeFlowrox selected model.	PNEUMATIC	*
F1	Filter Regulator + gauge (stainless steel AISI 316)	Filter Regulator + GaugeFlowrox selected model.FESTO PCR P G1/4 & G1/2	PNEUMATIC	*
F5	Filter Regulator OR Filter Regulator+ gauge	Filter Regulator OR Filter Regulator+ gauge (Non-standard)	PNEUMATIC	
G	Gate guard		ANY	*
H	Hydraulic Handpump (For Hydraulic only)	Manual hydraulic handpump for hydraulic actuators H only	HYDRAULIC	*
J1	Junction box small (Flowrox Standard)	Junction box small, for limit switches or solenoid valve, IP66, plastic, 2 pcs M12x1.5 and 1 pc M20x1.5, pre-wired.	ANY	*
J2	Junction box large (Flowrox Standard)	Junction box large, for limit switches and solenoid valve, IP66, plastic, 4 pcs M12x1.5 and 1 pc M20x1.5, pre-wired.	ANY	*
J4	Junction Box (Non-Standard)	Junction box out of Flowrox standard scope specification clarified on the proposal and under valve serial number.	ANY	
P1	Stainless steel fittings + Corrosion resistant tubing	High temperature & corrosion resistance	PNEUMATIC	
P2	AISI 316 Fitting and piping	Stainless steel fitting and piping	PNEUMATIC	
R	Readiness for ind. Limit switches	Readiness for 18 mm inductive limit switches.	ANY	*
R1	AC/DC (18mm cylindrical switch) (Flowrox Standard)	AC/DC,2-wire type,(24...240VAC / 24...240VDC) Flowrox selected model	ANY	*
R2	DC, PNP (18mm cylindrical switch) (Flowrox Standard)	DC,3-wire type, PNP (12...24V) Flowrox selected model	ANY	*
R3	DC, NPN (18mm cylindrical switch)(Flowrox Standard)	DC,3-wire type, NPN (12...24V) Flowrox selected model	ANY	*
R5	Limit switch (Non-Standard)	Limit switch out of Flowrox standard scope specification clarified on the proposal and under valve serial number.	ANY	
S	Magnetic limit switches (Flowrox Standard)	Magnetic limit switches, attached to aluminium pneumatic cylinder actuators. Cylinder fitted with magnetic piston.	PNEUMATIC	*
S5	Magnetic limit switches (NON-Standard)	Magnetic limit switches, attached to aluminium pneumatic cylinder actuators. Cylinder fitted with magnetic piston.	PNEUMATIC	
T	Mechan. Limit switches (Flowrox Standard)	Mechanical limit switches Flowrox selected model	ANY	*
T5	Mechan. Limit switches (NON-Standard)	Mechanical limit switches (Non-standard) Consult with Flowrox	ANY	
Z1	Solenoid valve, 24VDC, Monostable (Flowrox Standard)	Solenoid valve 24 VDC - with Nickel-plated brass fittings and plastic tubing. Flowrox selected model, monostable (Single coil).	PNEUMATIC	*
Z1B	Solenoid valve, 24VDC, Bistable (Flowrox Standard)	Solenoid valve 24 VDC - with Nickel-plated brass fittings and plastic tubing. Flowrox selected model, Bistable (Double coil).	PNEUMATIC	*
Z2	Solenoid valve, 230V, 50/60Hz, Monostable (Flowrox Standard)	Solenoid valve 230V - 50/60Hz - with Nickel-plated brass fittings and plastic tubing. Flowrox selected model, monostable (Single coil).	PNEUMATIC	*
Z2B	Solenoid valve, 230V, 50/60Hz, Bistable(Flowrox Standard)	Solenoid valve 230V - 50/60Hz - with Nickel-plated brass fittings and plastic tubing. Flowrox selected model, Bistable (Double coil).	PNEUMATIC	*
Z3	Solenoid valve, 110V, 50/60Hz, Monostable(Flowrox Standard)	Solenoid valve 110V-50/60Hz - with Nickel-plated brass fittings and plastic tubing. Flowrox selected model, monostable (Single coil).	PNEUMATIC	*
Z3B	Solenoid valve, 110V, 50/60Hz,Bistable(Flowrox Standard)	Solenoid valve 110V-50/60Hz - with Nickel-plated brass fittings and plastic tubing. Flowrox selected model, Bistable (Double coil).	PNEUMATIC	*
Z5	Solenoid valve, 24VDC, Monostable (Non-Standard)	24 VDC monostable (Single coil) solenoid valve out of Flowrox standard scope specification clarified on the proposal and under valve serial number.	PNEUMATIC	
Z5B	Solenoid valve, 24VDC, Bistable (Non-Standard)	24 VDC Bistable (Double coil) solenoid valve out of Flowrox standard scope. To be specified on the proposal and under valve serial number.	PNEUMATIC	
Z6	Solenoid valve, 230V, 50/60Hz, Monostable (Non-Standard)	230V 50/60Hz monostable (Single coil) solenoid valve out of Flowrox standard scope. To be specified on the proposal and under valve serial number.	PNEUMATIC	
Z6B	Solenoid valve, 230V, 50/60Hz, Bistable (Non-Standard)	230V 50/60Hz Bistable (Double coil) solenoid valve out of Flowrox standard scope. To be specified on the proposal and under valve serial number.	PNEUMATIC	
Z7	Solenoid valve, 110V, 50/60Hz, Monostable (Non-Standard)	110V 50/60Hz monostable (Single coil) solenoid valve out of Flowrox standard scope. To be specified on the proposal and under valve serial number.	PNEUMATIC	
Z7B	Solenoid valve, 110V, 50/60Hz,Bistable (Non-Standard)	110V 50/60Hz Bistable (Double coil) solenoid valve out of Flowrox standard scope. To be specified on the proposal and under valve serial number.	PNEUMATIC	
X	Must be specified	Additional auxiliary equipment not listed.	ANY	

* Flowrox standard options

Valmet Flow Control Oy

Marssitie 1, 53600 Lappeenranta, Finland.

Tel. +358 10 417 5000.

www.valmet.com/flowcontrol

Subject to change without prior notice.

Neles, Neles Easyflow, Jamesbury, Stonel, Valvcon and Flowrox, and certain other trademarks, are either registered trademarks or trademarks of Valmet Oyj or its subsidiaries in the United States and/or in other countries.

For more information www.neles.com/trademarks

